

# Cape Cod Regional Technical School

Harwich, MA

## Career Technical High School

12 Town region

650 students

221,000 square feet



*Original Building - 1973*

## Career Technical Programs

15 programs reduced from 17

Automotive Collision

Automotive Technology

Carpentry

Cosmetology

Culinary Arts

Dental Assisting

Design & Visual Communications

Electrical

Engineering

Health Technology

Horticulture

HVAC

Information Technology

Marine Services

Plumbing



Provincetown

Cape Cod Tech

Harwich

Mashpee

*Key Educational Goals*

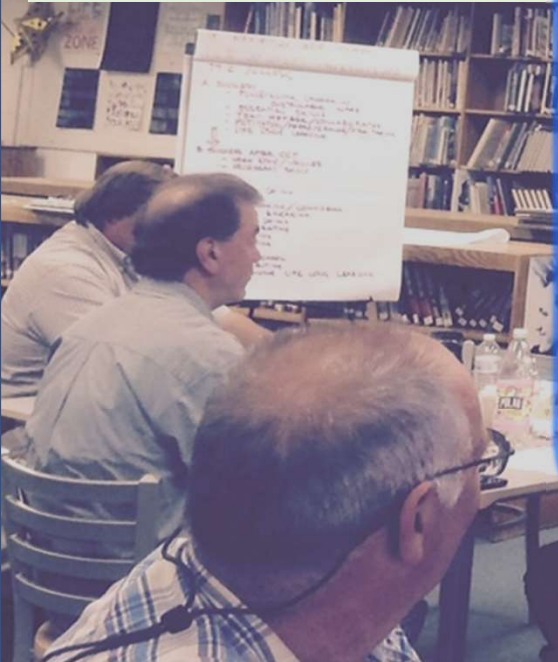
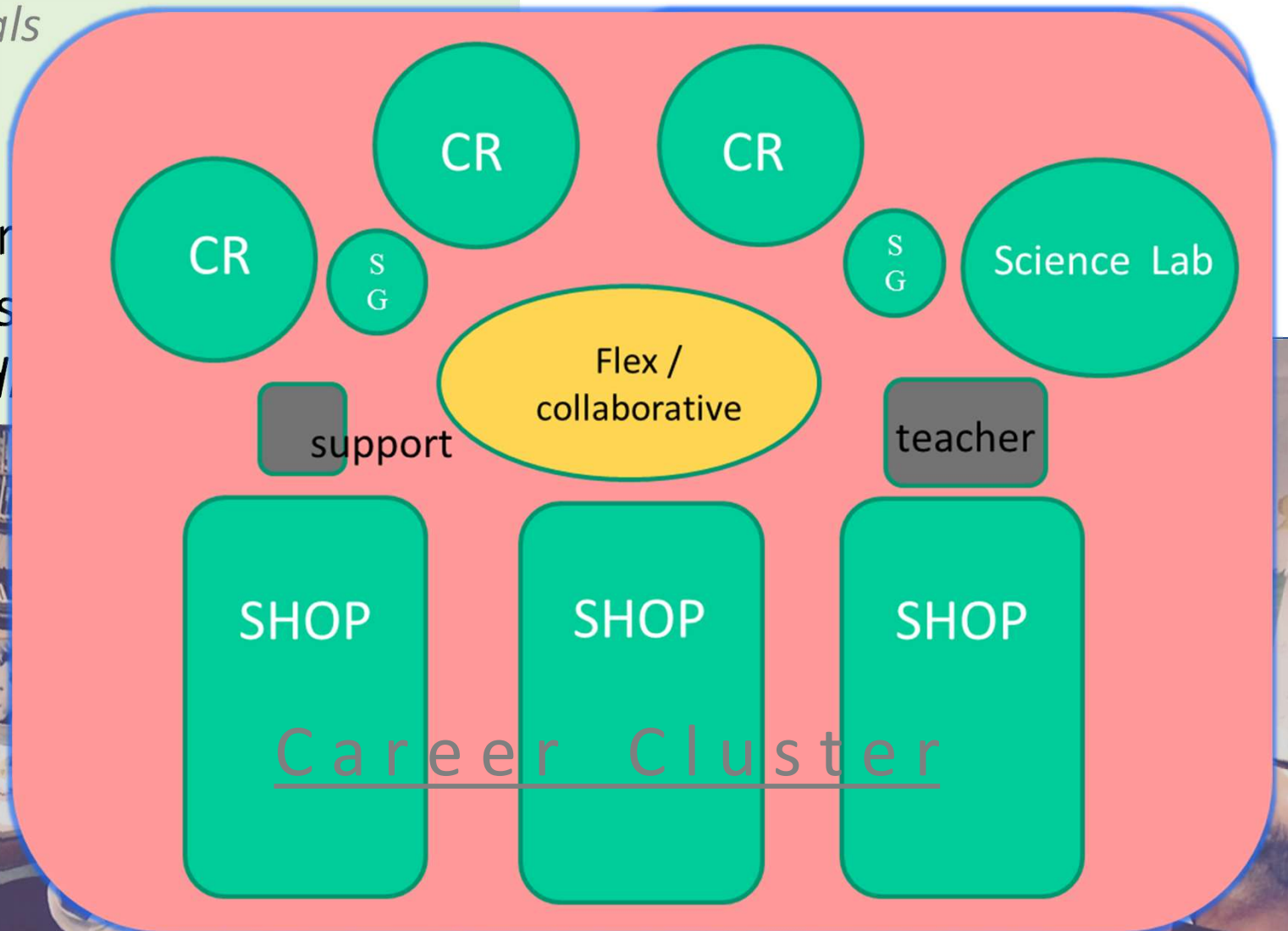
Flexibility

Collaboration

Project-based learning

Integration / cross

*Sustainable- Build*







## *Guiding Principles*

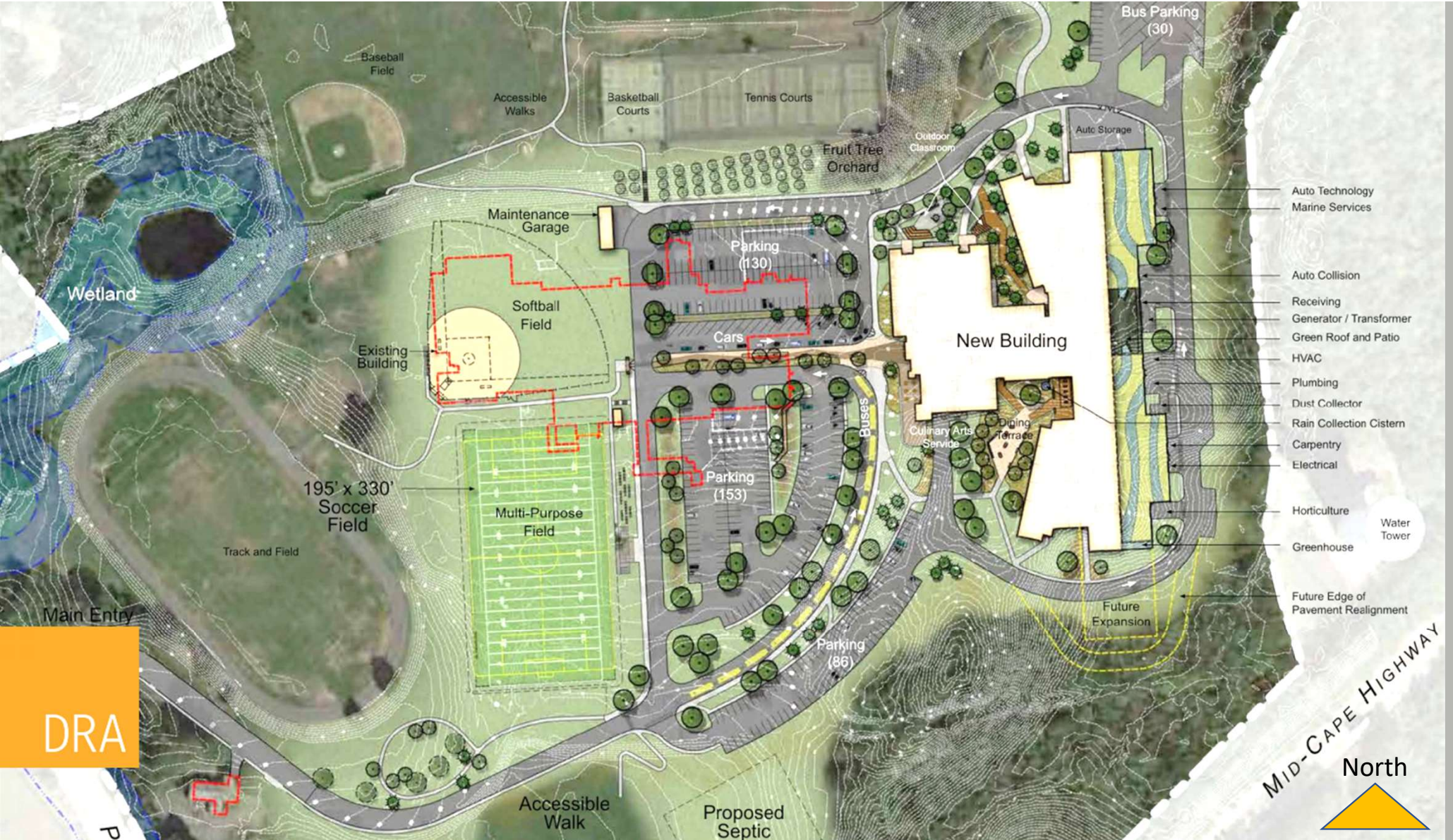
- Students involved in planning
- Sustainability is visible
- *“Learning happens everywhere”*
- Cape Cod environment informs design
- Sustainability can be integrated into the curriculum





Building  
Zone

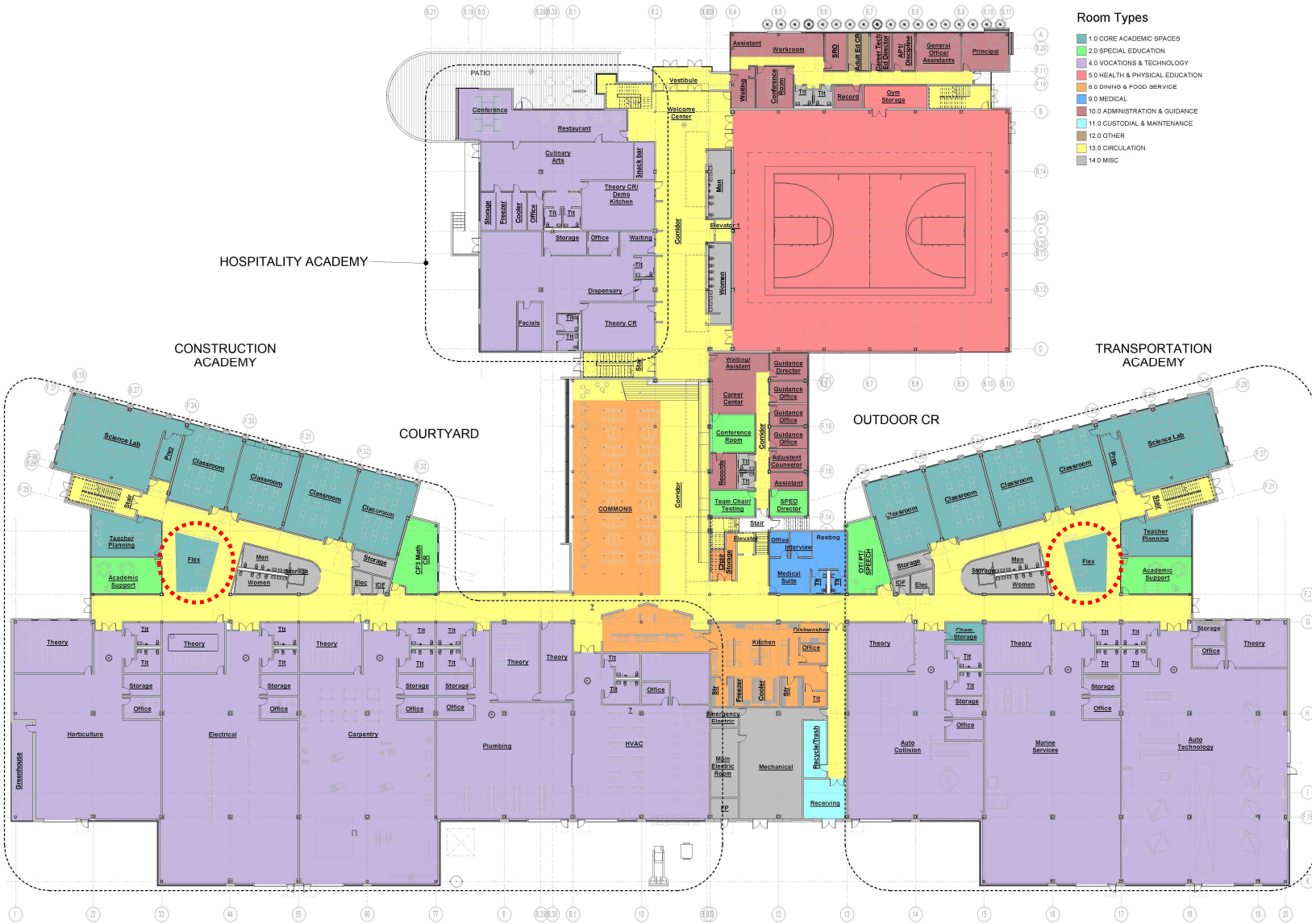




DRA

MID-CAPE HIGHWAY  
 North





Main Floor



- Room Types**
- 10.000 ACADEMIC OFFICE
  - 10.010 SPECIAL EDUCATION
  - 10.020 CLASS ROOM
  - 10.030 VOCATIONAL & TECHNOLOGY
  - 10.040 LIBRARY
  - 10.050 LABORATORY
  - 10.060 ADMINISTRATION & BUSINESS
  - 10.070 OFFICE
  - 10.080 CIRCULATION
  - 10.090 HALL

Upper Floor

























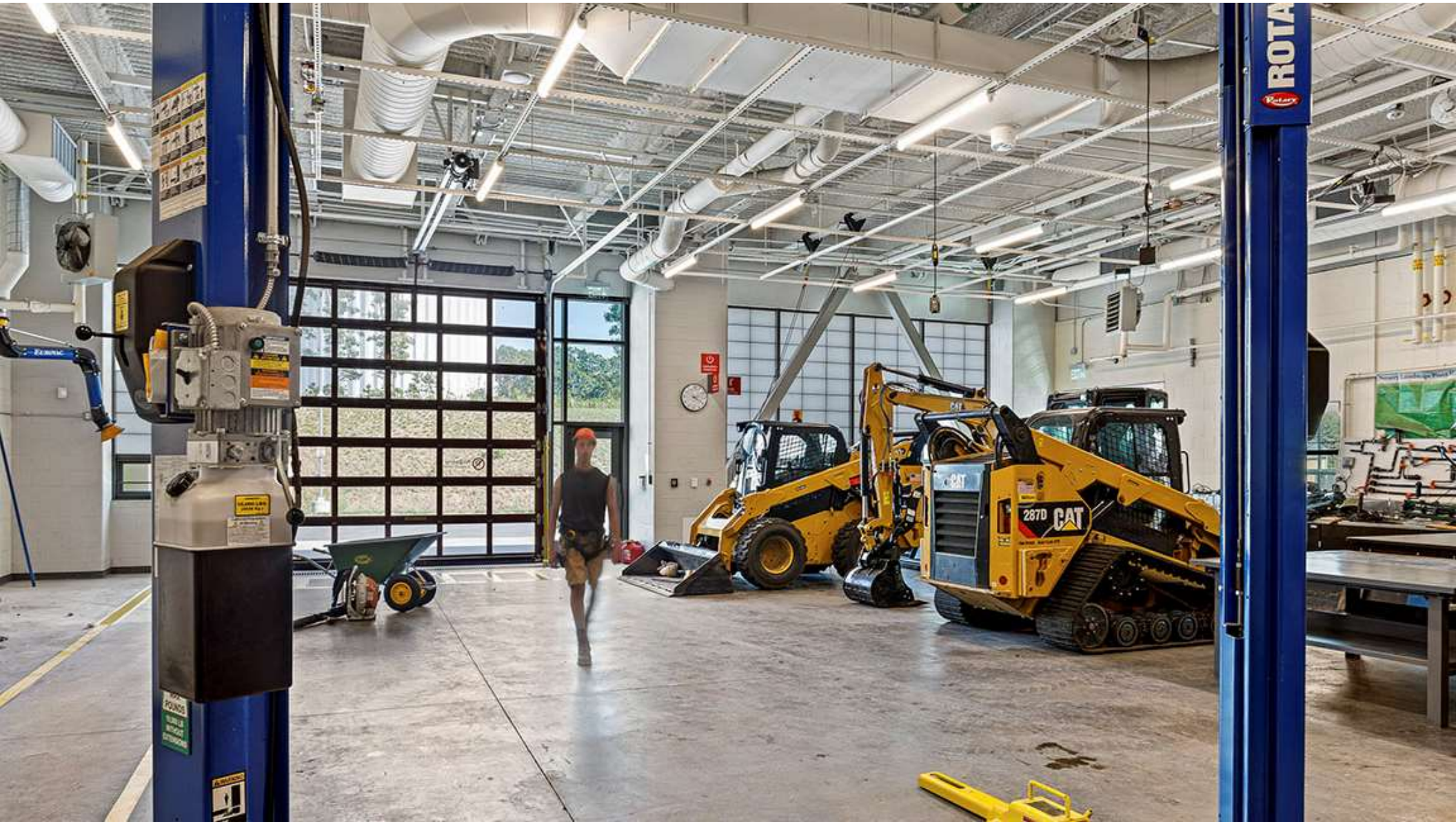




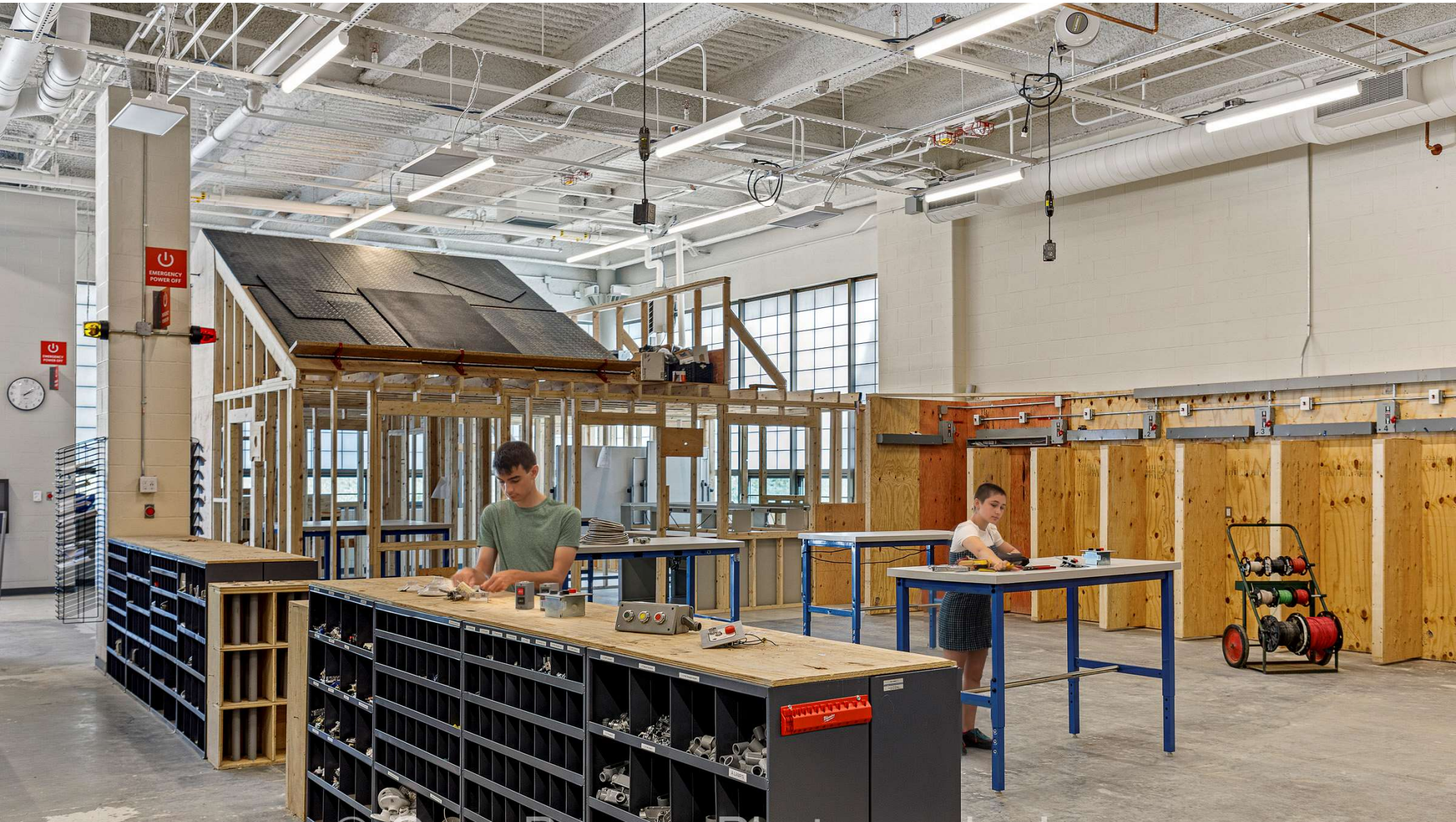
















## *Sustainability & Career Technical Schools*

### Opportunities

- **Involve Instructors, Students, and Advisory Committees** in the Planning Process
- **Integrate Sustainable Strategies** into the Curriculum, especially with Project Based Learning
- **Make Sustainability Visible** in the Building and Grounds
- **Involve Instructors and Students** in the **Maintenance and Operation** of the School



Thank You!